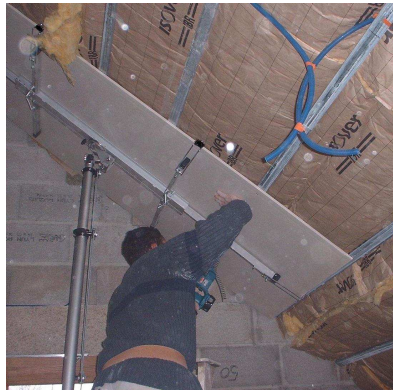




# K.S.F. - Electric Drywall Lifter

The Drywall Lifter is design to reduces labor cost,  
ONE person can easily operate it.

It's suitable for position the drywall board, panel, insulation boards and similar sheets.



DW 520

- The distance of two arms up to 3,58 m to take sheets up to 4' x 16'.
- It's can be operate in horizontal, vertical and ceiling positioning.
- Vertical loading height without ground clearance.
- Mounted on 125 mm (5 inches) wheels of caster with break for easily movement.
- Equipped with the backstop device (DW 340)
- **Set-Up without tools** : The legs can be release or fold in seconds without tools.
- Telescoping legs (DW 520) versatile and infinitely adjustment, available use in uneven ground, like stairway
- Electric remote control with variable speed switch
- The **variable speed** control can be soft start or adjust the micro operating height.
- Emergency Stop Button : press the button for stop raising or lowering immediately for emergency.
- Manual operating in case of power failure.
- Completely portable, lightweight design for you to easy carry and transport it.
- Telescoping Mast : constructed by heat treated, robust aluminum, compact and reliability.
- **Automatic Overload breaker**: it equipped to prevent to over weight loading.
- Special design can work close to the wall
- Voltage 230 V

KSF	Lifting height	Ground opening	Load capacity	Basic height	Loading height (vertical)	Loading height (horizontal)	Mast weight	Cradle weight
DW-340	3,45 m	1 m x 1 m	90 kg	1,02 m	0 m	57 cm	26 kg	8 kg
DW-520	5,20 m	1,20 m x 1,20 m	68 kg	1,30 m	0 m	76 cm	40 kg	8 kg

**KEM.TECH** **KSF EUROPE**  
 Rue des Délices, 5  
 CH - 1203 Genève  
 Tel + 41 (0)79 937 09 97  
 Fax + 41 (0)43 411 91 39  
 ksf-europe@ksf.com.tw  
 www.upter-ksf.com

Specifications changed without notice